

Welcome to our special information letter regarding keeping children and each other safe before and after school!

If you need any further information or support about anything in this letter, please contact the school office on 01132164800 or email us at [office@whitecote.co.uk](mailto:office@whitecote.co.uk)

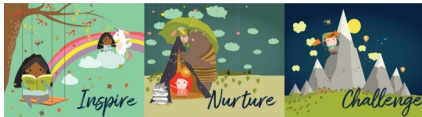


## Before School

Children should not come to school early, they cannot be supervised on the school grounds, we are pleased they are eager to come to school but arriving from 7.30am onwards is only acceptable if children are registered in breakfast club. We are keen to share that our breakfast club has places available and is £3 which includes a great breakfast choice of a range of cereals, toast and fruit, please get in touch with us for more information or to book your child in!



Our outdoor areas are fantastic! We have two great spaces in nursery and reception that our younger children have brilliant learning experiences in. They are actually outdoor classrooms and our staff spend time before and after school setting out resources and learning activities ready for the fun educational day ahead! We have had some instances where older children who are early into the grounds are playing in these areas, we can see why that is tempting! However, it does mean that this disturbs the outdoor classroom resources and the areas are not designed for bigger children. Please remind your children to keep out of the areas before and after school and to follow instructions if staff need to remind them.



## After School

We are fortunate to have our pastoral team and members of the senior leadership team available on afternoons to speak with parents and children, take queries and say farewell after a fun day at school! They are not there to make sure your child is supervised once released into your care from their classroom, after a couple of near misses recently where children have left without their adult after becoming separated, we wanted to remind you that the staff on the gate are seeing hundreds of people pass through and can't watch out for your child vigilantly. All children were re-united by the way!



[THINK! – Road safety](#) The Think! Road safety website has lots of useful information and guidance on how to ensure children remain safe when using road, please click the link for more detail!

## Collection/Early Pick up

We all understand that things change, but please make every effort to ensure that the office receive any changes to collection arrangements before 2pm. We often have more than ten calls very late on asking for messages to be delivered to class or for children to be collected early. We need to keep the office staffed with one person so the phone and gate can be answered and with the best will in the world, sometimes it's impossible to reach all the children in such a short space of time!

Please reconsider picking your children up early; at the end of the day they are finishing off work, having quiet story time, receiving homework or instruction for the following day and more. It is an important part of the day and really disruptive for them and distracting for their class if they need to leave early, collect bags, coats etc—especially if it is an assembly day!

