

# Topic: Animal Drawings

## Year 1

### What I should already know

- I can make marks with a pencil or paintbrush.

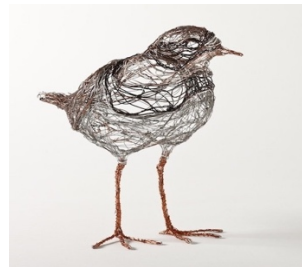
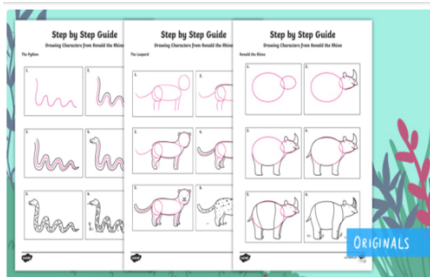
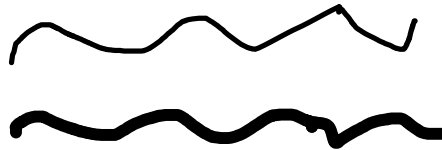
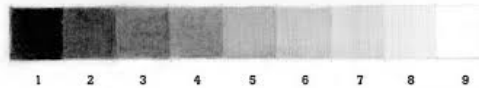
### Key Knowledge

Harder pencils (H) produce lighter marks.

Softer pencils (B) make darker marks.

I can use the pencil to draw lines of different shapes and thickness.

Clay can be cut, rolled & coiled into shapes.



### Vocabulary

<b>Thick</b>	Wide
<b>Thin</b>	Narrow or not wide
<b>Draw</b>	Making lines on paper
<b>Sketch</b>	A rough drawing
<b>Design</b>	A plan or pattern
<b>Create</b>	Make something
<b>Cut</b>	To divide it into pieces, or to mark it or damage it.
<b>Join</b>	Fix or fasten together.
<b>Texture</b>	Surface of something. E.g smooth, rough etc.
<b>Pattern</b>	A decorative design
<b>Coil</b>	One loop in a series of loops
<b>Print</b>	An marks made by transferring an image from one surface to another
<b>Shape</b>	Giving an object a particular shape, using your <u>hands</u> or a <u>tool</u>
<b>Form</b>	Things/materials that are moved or are arranged so that this shape is made.

