



Whitecote Newsletter

MARCH 2026

M T W T F S S

						1
2	3	4	5	6	7	8
9	10	11	12	13	14	15
16	17	18	19	20	21	22
23	24	25	26	27	28	29
30	31					

2. Acorns - Painting Sunflowers.

12. Year 2 Stay and Read.

3. Year 5 & 6- Multi-skills Tournament.

18. Nursery Stay and Play

5. World Book Day Stay and Read.

26. Year 2 - Yorkshire Wildlife Park Trip

9. Science Week Starts.

27. School Council - Visit to Leeds City Hall

Useful Links!

The links below offer helpful guidance for any families who feel they may need support while caring for children. Whether you are looking for advice, practical resources, or someone to talk to, these services are designed to provide reassurance and assistance whenever it's needed. We hope you find them useful.

- o Adoption Uk - [Adoption UK Charity](#)
- o Kinship Care - [What is kinship care? - Kinship](#)
- o Barnardo's - [Leeds Children's Rights \(Advocacy Looked After\) | Barnardo's](#)
- o Coram Voice - [Home - Coram Voice](#)
- o Care Leavers and Children in Care Council - [Leeds Youth Voice | Leeds.gov.uk](#)
- o ARC - [What is ARC? - ARC Framework](#)
- o Leeds Pathways Team (Avoiding NEET) - [Leeds Pathways | Leeds.gov.uk](#)

INC Winners!

CHALLENGE - I will learn how to dual code to help me remember.

R APPLE - Megan M - You have been amazing at using the doubles song to recall and record the double facts to 5! Well done Megan.

R PEAR - Myah BB - You have done a great job of drawing counters to help your maths learning in provision independently, well done!

1 LAVENDER - Esme L - you used your double facts to help work out near doubles in maths. Well done Esme.

1 ROSE - Isabella M - You followed your DT plan to build a superb raft. Well done Isabella!

2 WILLOW - Carson F - You used the pictures and the sentence clues to help you in your reading test!

2 HAZEL - Keira B - You drew tens and ones during the maths assessment to help you work out the answers. Well done!

3 SPRUCE - Kaiden H - Kaiden has been working hard on creating his own sentences using the prompts given and being able to share these sentences with the group. Well done!

3 YEW - Nicole G - You have been able to draw to help you progress in Maths and you have practised your handwriting at home to help you progress. Well done, Nicole!

4 ASH - Ellis P - You have been building pictures in your head when reading and sharing your ideas.

4 BEECH - Ibrahim F - You have been building pictures in your head when reading.

5 CHESTNUT - Daisy S - You have been building a mental picture in reading, helping you to answer questions.

5 ELM - Lewis S - You have been using images to help decode complex meanings in PE

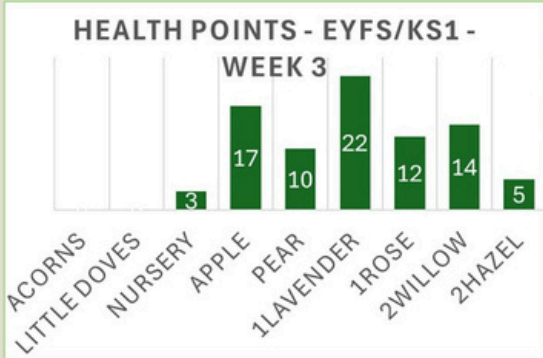
6 CEDAR - Logan - You are using a variety of learning tools to support your SATS and have made excellent progress!

6 OAK - You used the pictures and the sentence clues to help you in your reading test!



Healthy Selfie Winners!

Health Points – EYFS/KS1 Week In the lead... 1 Lavender!



Keep sending those Healthy Selfies to Earn a trip to the park!
healthselfie@whitecote.co.uk

KS1 Health Points are in...
and we have our leaders! 🌟🌿

★ Week 3 Results:

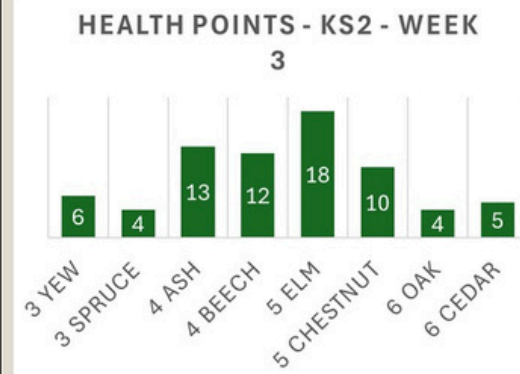
- 🏆 1 Lavender storming ahead with 22 points!
- 👏 Reception Apple close second on 17 points
- 📷 Photo of the Week goes to Summer B, 2 Hazel – fantastic effort!

KS2 Health Points are in...
and we have our leaders! 🌟🌿

★ Week 2 Results:

- 🏆 5 Elm storming ahead with 18 points!
- 👏 4 Ash close behind with 14
- 👏 4 Beech chasing on 13
- 📷 Photo of the Week goes to Alexander H 4 Beech – fantastic effort!

Health Points – KS2 – Week 3 In the lead... 5 Elm!



Keep sending those Healthy Selfies to Earn a trip to the park!
healthselfie@whitecote.co.uk

A huge well done to everyone who's been getting involved and sending in their Healthy Selfies – we love seeing your positive choices in action! 📷❤️

✉️ **Send them to: healthselfie@whitecote.co.uk**

Let's see who takes the lead next week... 👁️🍏🏃♂️♂️




LUNCHES!

Make mornings easier by pre-ordering!

MIGHTY MEALS MENU 2026					
Great school lunches designed to help young people grow and thrive in everything they do! Seasonal vegetables are provided with all meals or children can opt out for our 'Pick Your Own' salad bar.					
	MONDAY	TUESDAY	WEDNESDAY	THURSDAY	FRIDAY
Mains	Margherita Pizza (V)(H) Homemade Jacket Wedges	Ham and Pepper Quiche Baby New Potatoes	Breaded Chicken with Katsu Curry Sauce Sunshine Rice	Roast Pork with Stuffing Yorkshire Pudding Mashed Potatoes Roast Potatoes Gravy	Battered Fish (H) Chips
Meat Free	Vegetarian Super Five Pasta (V)(H)	Cheesy Bean Wrap (V)(H) Baby New Potatoes	Vegetarian Brunch Muffin (V)(H) Herby Diced Potatoes	Vegetarian Sausage with Stuffing (VE)(H) Yorkshire Pudding Mashed Potatoes Roast Potatoes Gravy	Vegetable Samosa with Yoghurt and Mint Sauce (V)(H) Masala Potato Salad
Deli	Egg Mayonnaise Bap (V)(H) Homemade Jacket Wedges	Tuna Mayonnaise Bap (H) Baby New Potatoes (H)	Cheddar Cheese Wrap (V)(H) Herby Diced Potatoes	Soft Filled Roll with either Roast Pork or Vegetarian Sausage (V)(H) Roast Potatoes	Tuna Mayonnaise Wrap (H) Chips
Spud Station	Jacket Potato with Coleslaw (V)(H)	Jacket Potato with Baked Beans (VE)(H)	Jacket Potato with Tuna Crunch (H)		Jacket Potato with Cheddar Cheese (V)(H)
Desserts	Ice Cream with Homemade Berry Sauce	Apple and Yoghurt Sponge with Creamy Custard	Lemon Drizzle Cookies with Fresh Fruit Wedges	Cheese and Crackers with Apple Wedges	Fudgy Chocolate Brownie with Fresh Fruit


Whitecote Primary School
N4 Week ONE
W/C 23/02, 14/03, 27/04, 18/05, 08/06, 29/06, 20/07



YUM!
In addition to hot meals your child can choose:

Deli
Filled fresh Soft Bap or Tortilla Wrap with side.

Spud Station
Oven baked Jacket Potato with side.



Please remember to order your child's meals on SchoolGrid (schoolgrid.co.uk).

Choosing meals at home means your child knows what they'll be having for lunch each day. You can order up to the end of the half term, or do this weekly or daily – whatever works best for you.

Orders can be placed online until 9:00am, or through the school office until 9:45am. After this time we can't guarantee availability as the chef will have already started cooking.

Ordering in advance helps mornings run a little smoother and means one less thing to think about! 😊

Healthy Habits

At Whitecote Primary, we're proud to promote healthy habits every day.

💧 Water Only Reminder 💧

To support children's health, concentration and teeth, please remember that sugary cordials and fruit juices aren't allowed in school, unless your child has a packed lunch as per the school policy.

Water should be brought in bottles each day to keep children hydrated and ready to learn.

Together, we're building strong, healthy habits for life.



Attendance Counts!

★ LET'S MAKE EVERY DAY A WHITECOTE DAY! ★

SCHOOL IS MORE FUN WHEN YOU'RE IN IT – FRIENDS, LEARNING, ROUTINES, ALL THE GOOD STUFF. EVEN A FEW DAYS OFF CAN SNEAK UP ON YOU... 10 DAYS MISSED = 95% ATTENDANCE!

WE'RE AIMING HIGH AT 97%+, AND WE KNOW OUR FAMILIES CAN SMASH IT.

NEED HELP WITH ROUTINES, TRAVEL, OR ANYTHING ELSE? WE'VE GOT YOUR BACK. 🍎

TURN UP, SHINE BRIGHT, KEEP GROWING!

Our Learning

Set Sail with Year 1! The Great Raft

Experiment



Year 1 have been busy designing and building their own rafts using plastic bottles as part of their DT learning. The big question... would they float?

Parents joined us to take part in designing and building the rafts, and it was great to see the children proudly launching their creations and seeing which designs stayed afloat. A fantastic mix of creativity, teamwork and problem solving! Thank you to all the parents that attended the workshop. 🚀



Easter Hamper up for grabs!



Be in with a chance to win our Easter Hamper!

'How can we improve playtimes?' Complete these 5 minute surveys to help improve your child's experience of play and lunchtime and get FREE ENTRY into an Easter Hamper raffle! There is a parentcarer survey and a separate pupil survey. Pupils who enter their name will be entered into the prize draw. We really look forward to hearing your opinion and any thoughts you may have on play at our school!

[CLICK HERE FOR THE PARENT SURVEY LINK](#)

[CLICK HERE FOR THE PUPIL SURVEY LINK](#)

Whats on & Things To Do!

WHITECOTE PRIMARY PRESENTS

Science Exhibition

TUESDAY 17TH MARCH
SCHOOL HALL 3:30-4:00PM

PARENTS, CARERS AND CHILDREN WELCOME!

YEAR GROUP DEMONSTRATIONS OF SCIENCE WEEK ACTIVITIES 3:30 - 4:00PM

WE ARE HIRING Site Superintendent!

- Help keep our school safe, welcoming and running smoothly! The role includes opening and closing the school, general repairs and site maintenance.
- If you're practical, proactive and able to work both independently and as part of a team, we'd love to hear from you. Experience in general repairs, basic plumbing and site maintenance would be ideal.
- 37 hours per week, all year round (split shift 7.30am-6.00pm with a break).
- School visits welcome - contact the office on 0113 216 4800 to arrange.



Find an application form on our website or collect a paper copy at the school office.

IF YOU THINK THIS COULD BE THE ROLE FOR YOU - APPLY NOW!

UPCOMING WCG EVENTS



FEB 9-13	Mother's and Other's day donation collections. AT DROP OFF AND PICK UP TIME - ON THE PLAYGROUND
MARCH 13	Mother's and Other's day sale ALL MORNING - IN SCHOOL
MARCH 30	KS1 Spring DISCO 3.30-4.30
MARCH 31	KS2 Spring DISCO 3.30-4.30

Mother's and Other's day donations - more information

SO THAT OUR CHILDREN HAVE THE OPPORTUNITY TO BUY A PRESENT FOR THEIR MOTHER, OR OTHER, ON THE 13TH MARCH, WE NEED DONATIONS!

WE ARE LOOKING FOR SWEETS, CHOCOLATE, BOTTLES, BATH/SHOWER PRODUCTS, CANDLES AND ANY OTHER SIMILAR GIFTS.

DONATIONS CAN BE GIVEN ON EVERY DROP OFF/PICK UP TIME ON THE WEEK COMMENCING 9TH FEBRUARY. THERE WILL BE TRUGS ON THE PLAYGROUND FOR DONATIONS.

MORE INFORMATION ABOUT OTHER EVENTS WILL BE POSTED SOON.

Whats on & Things To Do!

NHS
The Leeds Teaching Hospitals
NHS Trust

Meet the Midwives at Leeds Baby Bank Hub

Are you or your partner *pregnant*, or have you *recently had a baby*?

Our friendly midwives are here to give you support on a range of topics including:

- Pregnancy and maternity advice
- Support and advice for mums, dads and carers
- Baby care (bathing, changing nappies)
- Housing and benefits
- Food bank and baby equipment support
- Healthy eating and lifestyle support

And much, much more!

Every Monday, 10am - 12 noon
Baby Bank, European House, 95 Wellington Road LS12 1DZ

Leeds Maternity Care




JOIN OUR 5-12 HENRY COURSE IN APRIL 2026

Feel more confident as a parent

- Discover physical activities for your little ones
- Discuss what children and the whole family eats, family lifestyle habits and enjoying life as a family!

Book your place now by visiting www.bramleycluster.com



West Cluster

the national sleep helpline

Do you have a child who doesn't sleep?

Speak to trained sleep advisors

03303 530 541

thesleepcharity.org.uk



Connect Together Launch Events



Meet the team and find out how they help children, young people and families connect to hobbies and activities in their local area

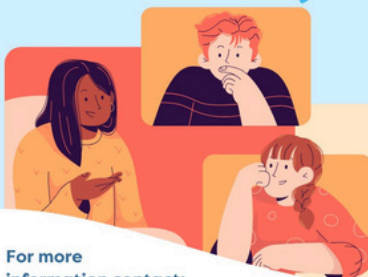


Weds 18th March
Online Teams Meeting
Meeting ID: 369 927 748 517 30
Passcode: pW9AS6ip
2pm to 3pm

Weds 25th March
Armley Hub
(2 Stocks Hill, Armley, Leeds, LS121UQ)
11:30am to 1:30pm

Open to any practitioner, parent/carer or young person

Thurs 26th March
Bramley Hub
(Hough Lane, Bramley, Leeds LS13 3ND)
11:30am to 1:30pm



Connect Together is a Social Prescribing service that supports young people and children aged 5 to 16.

For more information contact:

laura.minney@barca-leeds.org

amanda@barca-leeds.org

07587 035 313

07884 548 729



WHITECOTE SCHOOL TRIPS

KEY



Packed Lunch



Outdoor Shoes



Overnight Bag



Pyjamas



Backpack



Waterproof coat



Toiletries



Own Clothes

Year 2 Yorkshire Wildlife Park 26th March 2026

Price - £20.50 to be paid on Arbor by
13th February 2026

Departing - 08:00am
Returning - 15:15pm



Reception Abbey House Museum 21st April 2026

Price - £12.50 to be paid on Arbor
by 31st March 2026

Departing - 08:45am
Returning - 12:45pm



Year 5 - Lineham Farm 10th - 12th June 2026

Price - £120.00 to be paid on Arbor
by 20th April 2026

Departing - 08:30am
Returning - 15:15pm



Year 4 - Hadrian's Wall 2nd - 3rd July 2026

Price - £90.00 to be paid on Arbor by
1st May 2026

Departing - 08:45am
Returning - 15:00pm

