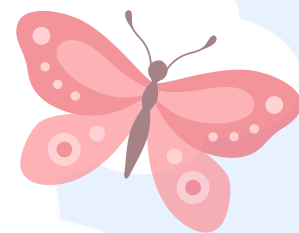
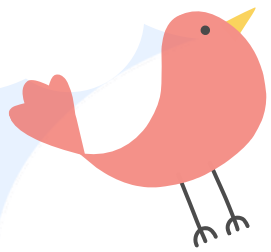


Whitecote Primary School



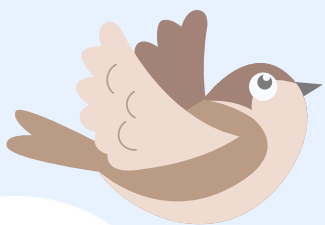
Mindful Gardening Project

We're excited to be launching a Mindful Gardening Project in school – a calm, creative space where children can connect with nature, support their wellbeing, and learn new skills.



To help bring our garden to life, we are kindly asking for donations of:

- Seeds (flowers, herbs, vegetables)
- Compost or soil
- Children's gardening tools
- Plants or seedlings
- Garden centre vouchers
- Pots, planters or trays



Every small contribution will help us grow something special for our children.

If you're able to donate, please send items into school or speak to a member of staff.